

IMX2023



REGISTRATION BROCHURE

MAY 31 → JUNE 2 ★ **NASHVILLE** ★ MUSIC CITY CENTER

The Inland Marine Expo is moving to Nashville. #IMX2023 celebrates the important work being done along inland rivers, lakes, and intracoastal waterways of the United States. This annual event invites maritime and logistics professionals to collaborate on making marine transportation even more cost-effective, safe, and environmentally friendly.

IMX is produced by
**the WATERWAYS
JOURNAL**
Weekly

All-inclusive attendee registration covers:







+200 Exhibitors • Education Sessions • 10th Anniversary Party
Line Throwing & Competition • Networking • Awards Ceremony

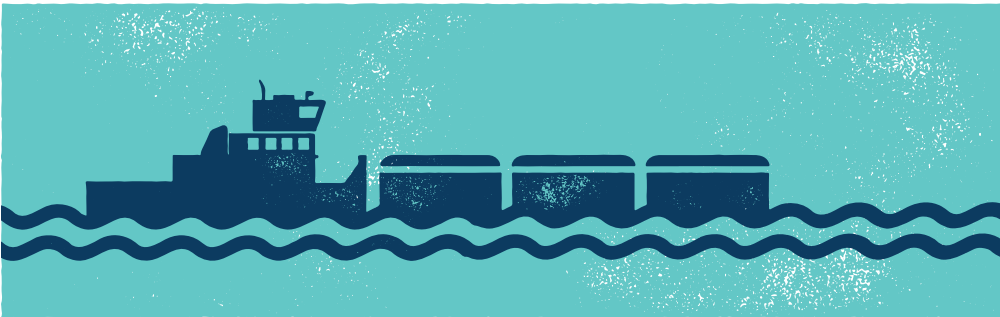
→ Sign up by March 27, 2023 for only \$90. ←

REGISTER NOW.

inlandmarineexpo.com

SCHEDULE OF EVENTS

★ WEDNESDAY, MAY 31 ★	
7:00 am - 5:00 pm	Registration
8:00 am - 4:30 pm	Exhibitor Move-in
8:00 am - 5:00 pm	Private Meetings: <i>Contact Emily Tintera to schedule emily@wjinc.net</i>
5:00 pm - 8:00 pm	Welcome Reception and Maritime Throwdown 
★ THURSDAY, JUNE 1 ★	
7:30 am - 5:30 pm	Registration
9:00 am - 5:00 pm	Exhibit Hours
9:15 am - 10:00 am	The State of the Maritime Industry and What's to Come
10:15 am - 11:00 am	MarAd's Capital Construction Fund and How the U.S. DOT Supports the Inland Waterways
11:15 am - 11:45 pm	Green Advantage: The Efficiency and Accessibility of Electric Machines for Ports and Terminals
12:00 pm - 1:00 pm	Lunch On Your Own
1:30 pm - 2:15 pm	Alternative Low Carbon Fuels for the Marine Industry
2:30 pm - 3:15 pm	Inhalation Hazards in the Marine Industry and How to Keep Workers and the Community Safe
3:45 pm - 4:45 pm	From Leaders to Legends: Words of Wisdom from Young Leaders and IMX Achievement Award Presentation 
5:30 pm - 7:30 pm	IMX 10th Anniversary Party   
★ FRIDAY, JUNE 2 ★	
8:30 am - 5:00 pm	Registration
9:00 am - 2:00 pm	Exhibit Hours
9:15 am - 10:00 am	Fleet Focus: U.S.-flagged Towboats, Tugs, Barges and Dredges
10:15 am - 11:00 am	Vessel Construction and Repair Contracts: What's Important? What's Not?
11:15 am - 11:45 am	Inflation and Its Effect on Marine Asset Valuations
12:30 pm - 2:00 pm	Class of 2023 40 Under 40 Awards  Lunch and Keynote Address
2:00 pm - 8:00 pm	Exhibitor Move-out
★ SATURDAY, JUNE 3 ★	
8:00 am - 12:00 pm	Exhibitor Move-out



Opening Keynote Session

THE STATE OF THE MARITIME INDUSTRY AND WHAT'S TO COME

Thursday, June 1 ★ 9:15 – 10:00 am

The currents that flow through the waterways of the United States never stop. They're always in motion, and so are the vessels and cargos that move on them. In high tide and low tide, through storms and calm weather, high water and low water, good economic times and bad, and despite pandemics or war, the people who make up the maritime industry are as resilient and dependable as the waterways on which they work.

From the men and women who move the cargos that feed and fuel the world to their shoreside support, along with those involved in vessel construction, sales and waterway management, all depend on the waterways of

the United States and the locks, dams and levees that control them. And while companies are conducting 5-year hull surveys in compliance with Subchapter M, they are also tackling some of the same workforce challenges facing all industries at this time. All this is simultaneous to the rollout of record congressional funding for waterway infrastructure and growing demand around the world for American products like oil and gas, petrochemicals and agriculture.

In this opening session of IMX23, industry leaders representing vessel operators, shipyards, critical marine infrastructure and ports/terminals will address challenges and opportunities



Clark Todd
President & CEO

Blessey Marine Services



Cherrie Felder
Vice President

Channel Shipyard Companies



Aimee Andres
Executive Director

Inland Rivers, Ports and Terminals Inc.

currently facing the inland towboat and barge industry.

Clark Todd, president and CEO of Blessey Marine Services and recent chair of AWO, will speak from the operators' perspective. **Cherrie Felder**, vice president of Channel Shipyard

Companies and chair of WCI, will focus on the needs for critical marine infrastructure along the inland waterways. **Aimee Andres**, executive director of IRPT, will represent ports and terminals on the nation's marine highways.



ACHIEVEMENT AWARD

From Leaders to Legends: Words of Wisdom from Young Leaders and IMX Achievement Award Presentation

Thursday, June 1 ★ 3:45 – 4:45 pm

The maritime industry has great leaders of all ages, in every role and at every career stage. For years, IMX has honored young leaders in the maritime industry. In this session, **Mike Breslin**, industry veteran and director of safety and sustainability for AWO, will interview previous recipients of the 40 Under 40 Award about what it takes to succeed in the industry, what makes a good leader and what they envision for the future. The session will culminate with the presentation of the 2023 IMX Achievement Award, given annually to individuals who have made a career-spanning impact on the maritime industry.



Mike Breslin
Director of Safety & Sustainability

American Waterways Operators



40 UNDER 40 AWARDS

Class of 2023 40 Under 40 Awards Lunch and Keynote Address

Friday, June 2 ★ 12:30 – 2:00 pm

What you do is important. It matters. It's essential. Whether you're on a vessel or onshore. Whether you're in sales or maintenance or construction. Whether you're in economic development or a member of a government agency. Together, you make up this vast maritime industry that's essential to feeding and fueling the world. We're with you. We celebrate you. And in this closing session of IMX 2023, we honor the up-and-coming leaders that will shape the maritime space for decades to come. Following a keynote from **Rev. Mark Nestlehuft**, president and executive director of The Seamen's Church Institute, this session will conclude with the presentation of this year's 40 Under 40 leadership awards.



Rev. Mark Nestlehuft
President & Executive Director

The Seamen's Church Institute

EDUCATION SESSIONS

★ THURSDAY, JUNE 1 ★

MarAd's Capital Construction Fund and How the U.S. DOT Supports the Inland Waterways

10:15 am

From its United States Marine Highway Program to the Small Shipyard Grant and its Capital Construction Fund, the U.S. Department of Transportation's Maritime Administration (MarAd) supports the maritime industry in many ways. Daniel Ladd, director of MarAd's office of financial approvals, will speak in this session on recent changes to the Capital Construction Fund, which aids vessel operators seeking to expand, replace or modernize their fleets. Since December 2022, the fund is open to operators of towboats and barges in the inland waterways; operations that offer bunkering, crew launch and ship assist services; and coastal tug and barge operators. In addition, Travis Black, director of MarAd's inland waterways gateway office, will discuss other agency initiatives, including the Marine Highway Program.

Daniel Ladd, Director of the Office of Financial Approvals, US Department of Transportation's Maritime Administration

Travis Black, Director, Inland Waterways Gateway Office, Office of Maritime & Intermodal Outreach, US Department of Transportation's Maritime Administration

Green Advantage: The Efficiency and Accessibility of Electric Machines for Ports and Terminals

11:15 am

For ports, terminals and cargo handlers, there are more options now than ever before for switching to electric or hybrid drive systems dockside and aboard vessels. In this session, Colleen Miller, national accounts manager of Sennebogen, will discuss the efficiencies and advantages of electrification and what grant funding is available to help make it a reality.

Colleen Miller, Sales and National Accounts Manager, Sennebogen, LLC

Moderator: Mary Lamie, Executive Director, St. Louis Regional Freightway

Alternative Low Carbon Fuels for the Marine Industry

1:30 pm

This session will cover various alternative fuels, such as biodiesel and renewable diesel, for various segments of the marine industry. The environmental, technical, and economical benefits will be discussed. Chevron Renewable Energy Group has several case studies with end users in the marine fuel supply chain utilizing biodiesel, and these results will be included in the presentation.

Jon Scharingson, Executive Director, Strategic Initiatives, Chevron Renewable Energy Group

Blue Sky Maritime Coalition

Inhalation Hazards in the Marine Industry and How to Keep Workers and the Community Safe

2:30 pm

Barge transfers, terminal operations, and other methods of intracoastal marine transportation occur daily across the United States. However, some activities have the potential for chemical emissions that could present an inhalation hazard for workers, nearby facilities or neighboring communities. Implementing appropriate air monitoring and sampling plans can provide data to make informed operational decisions, adjust industrial hygiene controls, and protect worker health. This data is also critical during unexpected emergencies, such as barge collisions, fires, or chemical spills. This session will cover the importance of data collection and recommendations to limit the potential for inhalation hazards for workers, industry partners, or nearby communities.

Dana Currie, PhD, Project Toxologist, CTEH, LLC

★ FRIDAY, JUNE 2 ★

Fleet Focus: U.S.-flagged Towboats, Tugs, Barges and Dredges

9:15 am

Interest rates, commodities markets, labor and logistics issues, vessel valuations, demands of cargo owners, government regulations: All these factors (and more) are impacting the fleet of today and tomorrow. In this session, Mark Lawrence, owner of Current Data LLC, and Stan Ekren, vice president of Great Lakes Dredge & Dock's river and lakes division, will discuss fleet size and construction trends related to U.S.-flagged towboats, tugs, barges and dredges.

Mark Lawrence, Owner, Current Data, LLC

Stan Ekren, Vice President, Rivers & Lakes Manager, Great Lakes Dredge & Dock Company, LLC

Vessel Construction and Repair Contracts: What's Important? What's Not?

10:15 am

The vessels that traverse our nation's inland waterway system require significant financial investment, both at the time of construction and during their life-cycle. The contracts that govern the construction and subsequent maintenance and repair of inland vessels often have millions of dollars at stake, if not more, and can have significant consequences for both parties if something goes wrong. Learn about the important aspects of vessel construction and repair contracts and the key concepts that should be addressed, from the perspective of both the shipyard and the owner.

Moderator: Chris Ulfers, Partner, Maritime Practice Group, Jones Walker, LLP

Inflation and Its Effect on Marine Asset Valuations

11:15 am

Inflation is driving up valuations for towboats, both existing vessels and new construction projects, due to scarce parts, logistics issues, the high cost of steel, high interest rates and more. Parts scarcity can lead to increased maintenance down time and vessel deliveries. And high interest rates are making companies reticent to move forward on new builds or acquisitions. In this session, George Beck, marine asset appraisal manager for Sabine Surveyors will discuss how the economy got here and how it's impacting the inland and coastal maritime industry.

George Beck, Marine Asset Appraisals Manager, Sabine Surveyors, Ltd.

SPECIAL EVENTS

WELCOME RECEPTION & MARITIME THROWDOWN

Wednesday, May 31 ★ 5-8 pm

MUSIC CITY CENTER

Spend your evening with IMX and Maritime Throwdown. Complimentary food, with Nashville flair, and drinks will be available as competition unfolds at Music City Center.

The Industrial Maritime Skills Challenge by Maritime Throwdown is back, and it's bigger and better than ever before! Partnering with Maritime Throwdown, the 2023 Finals will be co-hosted at IMX2023. The competition summons mariners from across the industry to compete on the MTD obstacle course and C-Hero Rescue Pole Challenge, showcasing skills, endurance, excellence, and safety. Witness some of the most talented maritime professionals in the world battle it out for the title of Maritime Throwdown champion at this intense, adrenaline-pumping, and high-stakes event.



IMX 10th ANNIVERSARY PARTY



FEATURING LOCAL BEER & MOONSHINE



CELEBRATE WITH IMX

Thursday, June 1 ★ 5:30–7:30 pm

@ 6TH AND PEABODY

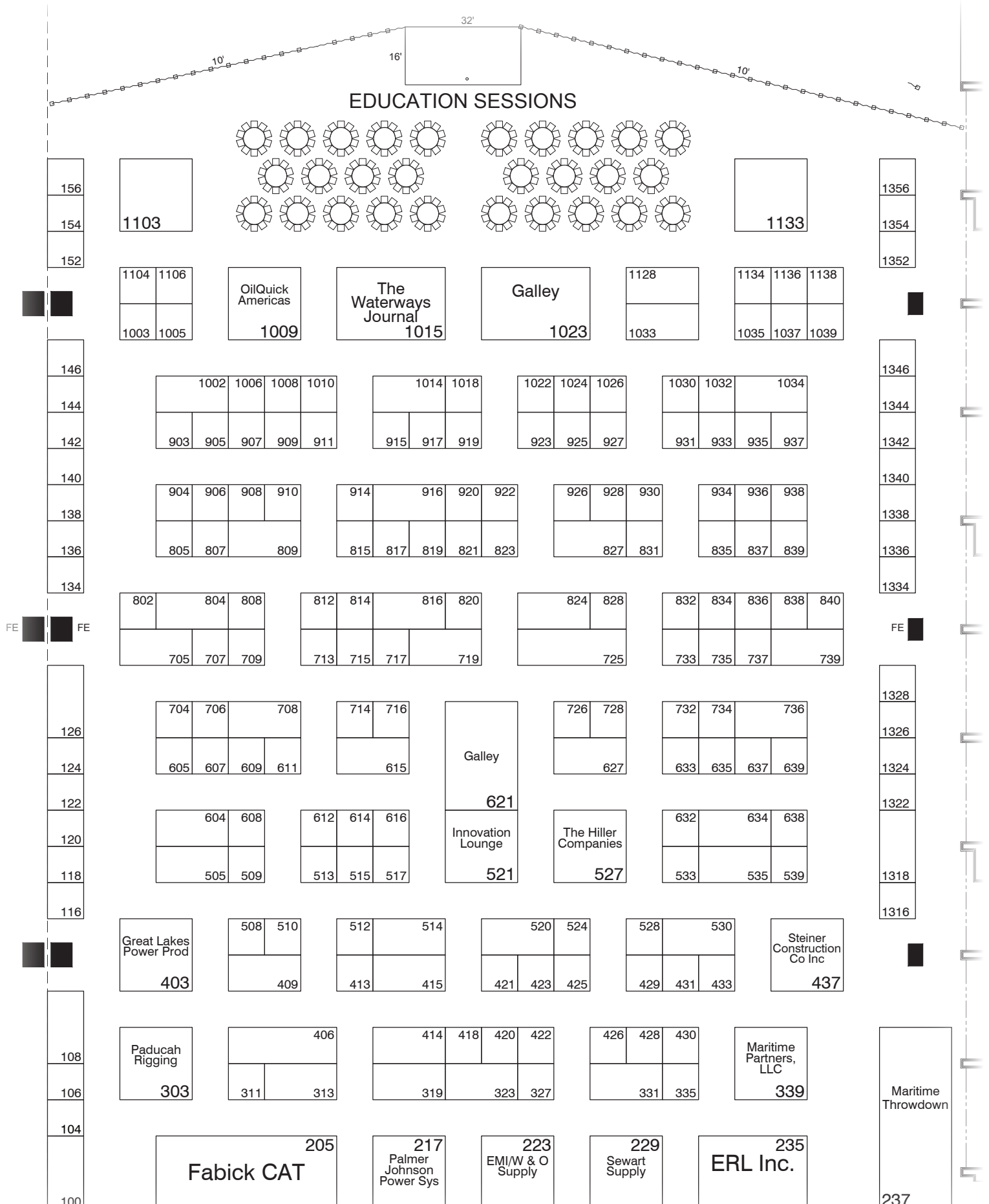
This year's official party will celebrate the Inland Marine Expo's 10th anniversary. After a full day of networking and education, head over to 6th and Peabody, located just one block southwest of Music City Center. This indoor/outdoor space is home to Ole Smoky Distillery and Yee-Haw Brewing Company. The event will feature The Patrick Smith Band, moonshine tasting, outdoor lawn games, and more. Access to this event is included in #IMX2023 registration.

Event sponsors:



EXHIBITOR LIST & FLOOR PLAN

EXHIBITOR..... BOOTH	EXHIBITOR..... BOOTH	EXHIBITOR..... BOOTH	EXHIBITOR..... BOOTH	EXHIBITOR..... BOOTH
360 Coverage Pros Marine License & Professional Liability Insurance..... 715	Controlled Water Systems, Inc..... 716	HealthWorks Medical, LLC..... 911	OilQuick Americas 1009	Sewart Supply..... 229
5R Enterprises, LLC 535	COPRI of ASCE..... 1336	Hefring Marine 935	On Site Alignment..... 820	Sherwin-Williams..... 1322
ABB Inc. 335	Coverra Insurance 637	Helm Operations 433	OXE Marine Inc..... 802	ShipConstructor USA, Inc. 733
ABCO Industrial Supply..... 1342	CTEH (Center for Toxicology & Environmental Health, LLC)..... 528	Hilliard Enterprises..... 708	Pacific Power Group 406	Sinex Solutions..... 706
ABS Wavesight..... 1346	Cummins..... 604	Humco Marine Products..... 108	Paducah Convention & Visitors Bureau 608	Smith LaSalle Inc..... 607
Acuity International..... 513	Cygnus Instruments Ltd..... 903	Indel Power Group 413	Paducah Rigging..... 303	SoftPoint Industries Inc..... 928
Advance Products & Systems, LLC..... 817	Datrex, Inc. 116	Industrial Diesel 938	Palmer Johnson Power Systems 217	Southern Thrusters, LLC..... 134
AG Crane & Equipment..... 1039	Davis Water Service..... 838	Industrial Service Solutions.... 634	Panel Specialists, Inc..... 428	Specialty Diving 1037
Ahead Sanitation Systems, Inc..... 1034	Deansteel Mfg. Co., Inc..... 1324	Inland Rivers Ports and Terminals, Inc. (IRPT)..... 154	PANOLIN America, Inc. 510	Standard Calibrations, Inc. (SCI)... 627
Alta Equipment Group 612	Desco Manufacturing Company 926	Interstate Power Systems..... 414	Patterson Manufacturing..... 804	Steerprop, Inc..... 512
American Pollution Control Corp. (AMPOL) 937	Dickson Marine Supply..... 311	J.F. Brennan Company Inc... 331	Phoenix Lighting 827	Steiner Construction Company Inc. 437
Anvil Attachments..... 106	Donovan Marine Inc..... 126	JRC Americas..... 327	PileMedic by QuakeWrap Inc..... 1032	Sterling Site Access Solutions.... 146
Arcosa Marine 425	Drury Hotels..... 814	Karl Senner LLC..... 323	Polaris Public Relations 925	Superior Diesel Inc / Bell Power Systems 1002
Arnold Company 122	E & K Equipment, Inc 1326	Kent Safety 632	Precision Tension Solutions... 907	Superior Industries 517
Bacon Farmer Workman Engineering & Testing / Marcum Engineering..... 426	E3 Environmental 717	Koden Si-Tex 1018	ProStack a TEREX Brand 914	Taylor Machine Works, Inc..... 805
BAE Systems 736	E-Crane International USA, Inc 1134	Laborde Products, Inc. 809	PTL Marine / Economy Boat Store 1344	TBS Safety..... 431
Barge Transfer Services 1005	Elliot Bay Design Group 399	Lawson Marine / Lawson Rigging and Fabrication.... 1340	PYI, Inc 915	Technical Marine & Industrial LLC 124
Bell Power Systems..... 1002	EMD® Engines by Progress Rail, A Caterpillar Company .. 530	LeBlanc & Associates, LLC..... 421	Quality Turbocharger..... 1030	Teledyne Flir..... 709
Belt Tech Industrial 1328	EMI / W & O Supply..... 223	LGS Marine Lighting..... 905	R.W. Fernstrum & Company .. 515	TG Technical Services 904
Bergan Marine Systems 505	Empire Foam Solutions, LLC .. 819	Louisiana Scrap Metal Recycling..... 1356	Rasmussen Equipment Company Wire Rope & Rigging 739	The Hiller Companies 527
BGH Specialty Steel..... 1334	Engines, Inc. 705	Living Lands & Waters..... 836	Rescue Technology 735	The Shearer Group Inc..... 1022
Boats and Harbors 934	Environmental Restoration, LLC 839	Lubriplate 713	Rice Nozzles 930	The Trustees of the Sailors' Snug Harbor in the City of New York 136
Boksa Marine Design..... 931	Environmental Works Inc..... 142	Lufkin Gears LLC..... 732	Ripple..... 1035	Thordon Bearings Inc. 514
Bollinger Shipyards 726	ERL Inc..... 235	Mactech, Inc..... 520	Riteks, Inc..... 840	Thrustmaster of Texas, Inc.... 933
Bow 2 Stern Services, Inc..... 807	Eurofins TestOil, Inc 917	MAGNA Lifting Products Inc.. 824	River Diving & Salvage, Inc..... 714	Timco Industries 1318
Boyd CAT..... 205	F & M Mafco, Inc. 725	Mainstream Commercial Divers, Inc..... 834	Roppel Industries 1136	Tnemec Company, Inc..... 831
Britmar Marine LTD..... 1024	Fireboy-Xintex..... 835	Mantsinen Group 719	RSC Bio Solutions 635	Towing Vessel Inspection Bureau (TVIB) .. 633
Bruks Siwertell..... 1106	Fleet Supply Warehouse..... 936	Marine Solutions, Inc. 429	Rumford industrial Group Inc. 609	TowWorks, LLC. 422
Bubble Tubing..... 808	Fuchs a TEREX Brand..... 914	Maritime Institute 908	Rustibus Inc..... 707	Transport Systems and Products Inc. 922
Bulk Storage Inc. 909	Fuel Ox, LLC 420	Maritime Partners, LLC..... 339	Sabine Surveyors, Ltd. 605	Triangle Enterprises, Inc. 611
Canadian Pond.ca Products Ltd..... 808	Furuno USA Inc. 1316	Masaba..... 832	Schoellhorn-Albrecht Machine Co., Inc..... 821	U.S. Army Corps of Engineers, Nashville District..... 906
Capital Bedding Company..... 910	G&C Multi-Services..... 138	McDermott Light & Signal 614	Schottel, Inc..... 423	Unipar, LLC..... 708
Carboline Company 524	Global Data Systems..... 823	McDonough Marine Service .. 1338	Schuyler Companies 539	Volvo Penta of the Americas.. 414
CGB Waterfront Services Co.. 118	GMENI Marine Electronics & Supplies..... 704	Michels Construction, Inc. 638	Scienco-FAST..... 728	The Waterways Journal 1015
Christie & Grey Inc..... 616	Great Lakes Marine Marketing, Inc 1014	Michigan Wheel..... 639	Scurlock Electric 816	WEG Electric..... 919
Civil & Environmental Consultants, Inc..... 140	Great Lakes Power Products.... 403	Mid-America Marine Positioning..... 152	Sea Horse Systems, LLC..... 104	West Kentucky Community & Technical College 508
CK Power 319	Greenfield Contractors LLC . 1138	Midwest Foundation 430	Seamen's Church Institute.. 1008	WIMOs Association 1006
Columbia Industrial Products..... 1026	Haley Marine Gears, Inc..... 509	Mike's Inc. 313	Seatrax, Inc..... 828	Wintech/Nabrico 409
ComMar Sales, LLC..... 615	Hancock County Port and Harbor Commission..... 1104	MobileOps 812	Sennebogen, LLC..... 100	WorkBoat 920
Commonwealth Turbocharger Solutions, LLC..... 1003	Hannan Supply Co..... 827	Moxie Media 815	Separation Equipment Company 837	Yale Cordage, Inc. 120
Conrad Shipyard, LLC..... 923	Harbor Lynx, LLC..... 927	MSHS (Formerly Motor-Services Hugo Stamp)..... 1033	Separator Spares and Equipment, LLC 421	Young Corporation..... 144
	Harrington Marine..... 1354	MTU – A Rolls-Royce Solution 415	SEPCO..... 916	ZF Marine Propulsion Systems Miramar LLC..... 418
	Hatteland Technology 737	Musco Lighting 734		
		Nauticomp Inc..... 1010		
		Northern Safety & Industrial.. 533		



Want to showcase your brand at #IMX2023?
Don't wait, booth space is almost sold out.

For traditional exhibitor opportunities, contact:
 Susie Jensen at susie@wjinc.net or (513) 304-1784

Looking to elevate your brand's exposure?

For custom sponsorship opportunities, contact:
 Emily Tintera at emily@wjinc.net or (314) 805-1395

HOTEL ACCOMODATIONS

Please make your reservation directly with the hotel(s).
Call and ask for the Inland Marine Expo room block or reserve online by
visiting inlandmarineexpo.com/hotel-travel/

Please book your hotel room
within the IMX hotel room
block by Friday, May 5.

★ IMX HEADQUARTER HOTEL ★

1

HILTON DOWNTOWN NASHVILLE
121 Fourth Avenue South,
Nashville, Tennessee 37201
(615) 620-1000; Fax: (615) 620-2050

SOLD OUT

Stay in the heart of ‘Music City’ at Hilton Nashville Downtown. You’ll be treated to true Southern hospitality and premier accommodations. Dine in style at our four on-site restaurants. You’ll relish our central location in the midst of all there is to see and do in Nashville. Explore the history of country music, catch live performances and take in all the sights and sounds of the entertainment district, all near our Nashville hotel.

2

DRURY PLAZA HOTEL NASHVILLE DOWNTOWN
300 Korean Veterans Blvd.
Nashville, TN 37201
(615) 259-7881; Fax: (615) 986-2779

\$254

Located in the heart of “Music City,” the Drury Plaza Hotel Nashville Downtown is perfect whether traveling for business or leisure. Guests enjoy free hot breakfast, free snacks and cold beverages at the 5:30 Kickback® and free Wi-Fi throughout the hotel. This downtown Nashville hotel features 14,000+ square feet of flexible meeting and banquet space to accommodate a wide variety of groups. Local attractions like the Bridgestone Arena, Country Music Hall of Fame and Ryman Auditorium are minutes away.

3/4

HOME2 SUITES & TRU BY HILTON NASHVILLE DOWNTOWN CONVENTION CENTER
500 Rep John Lewis Way South
Nashville, TN 37203
(833) 456-0830

\$249

A stay at Home2 & Tru Suites by Hilton Nashville Downtown Convention Center places you in the heart of Nashville, within a 10-minute walk of Country Music Hall of Fame and Museum and Music City Center. This hotel is 0.3 mi (0.6 km) from Nashville Broadway and 0.4 mi (0.6 km) from Bridgestone Arena.

5

HAMPTON INN & SUITES NASHVILLE DOWNTOWN
310 4th Avenue South,
Nashville, Tennessee 37201
(615) 277-5000

\$249

Located one block from the Country Music Hall of Fame and Museum, Music City Center, and Bridgestone Arena. It’s a 10-minute walk to Ryman Auditorium, the Johnny Cash Museum, and live music on Broadway. Titans pro football is a mile away, and Vanderbilt University is two miles west. Enjoy free hot breakfast, free WiFi, and our on-site restaurant.



REGISTER BY MARCH 27 FOR BEST RATES

	★ REGISTRATION COST ★		
	By March 27	After March 27	On-Site May 31-June 2
Attendee/Buyer	\$90	\$145	\$175
Non-Exhibiting Supplier	\$195	\$295	\$325

WHAT'S INCLUDED IN YOUR REGISTRATION

- Access to the trade show floor with 200+ exhibitors
- Opening session and keynote presentations
- All nine expert-led education sessions
- Exclusive networking events including:
 - Welcome Reception featuring Maritime Throwdown
 - IMX 10th anniversary party
 - Friday Awards Lunch

REGISTER AT

inlandmarineexpo.com

QUESTIONS? Email or call Andi Moravec: andi@wjinc.net | 314.241.7354

THANK YOU TO THE SPONSORS



SUPPORTING ORGANIZATIONS



SUPPORTING MEDIA

